

INSTALLATION INSTRUCTIONS

DESCRIPTION: B4J-F84P0-V0

PART NUMBER: Skid Plate Kit

MODEL: 2018+ Wolverine X2 / X4 and 2021+ Wolverine RMax2 / RMax4



⚠ WARNING

Please read and understand these instructions completely before installation to avoid possible injury, or damage to the accessory or vehicle.

WARRANTY INFORMATION:

In the United States, see your Yamaha dealer for a copy of the Yamaha Genuine Parts and Accessories Limited Warranty.

NOTICE:

Installation of this kit requires a torque wrench and should be performed by an authorized Yamaha dealer or a qualified mechanic.

DEALER OR INSTALLER:

These instructions contain important information for future reference and *must* be given to the customer.

PARTS LIST:

No.	Part Number	Description	Qty
--	B4J-F84P0-V0	Skid Plate Kit	-
①	B4J-F842N-V0	Center Skid Plate	1
②	BG4-F843J-V0	Left Skid Plate	1
③	BG4-F844J-V0	Right Skid Plate	1
④	BG4-F842A-V0	Rear Skid Plate	1
⑤	B4J-F1915-V1	Front Skid Plate (R-Max only)	1
⑥	BG4-F1549-V0	Cup Washer	41
⑦	95812-06016	M6x1x16mm Flanged Hex Head Cap Screw	43
⑧	90183-06809	M6 Spring Nut W/Distorted Thread, 13.5mm hole	37
⑨	90183-06812	M6 Spring Nut W/Distorted Thread, 19.5mm hole (Non-R-Max)	2
⑩	90111-06X26	M6x1x25mm Button Head Screw W/Flange	4
⑪	BG4-F8426-V0	Bracket (Non-R-Max)	1

* Part supplied with kit only and not available separately.

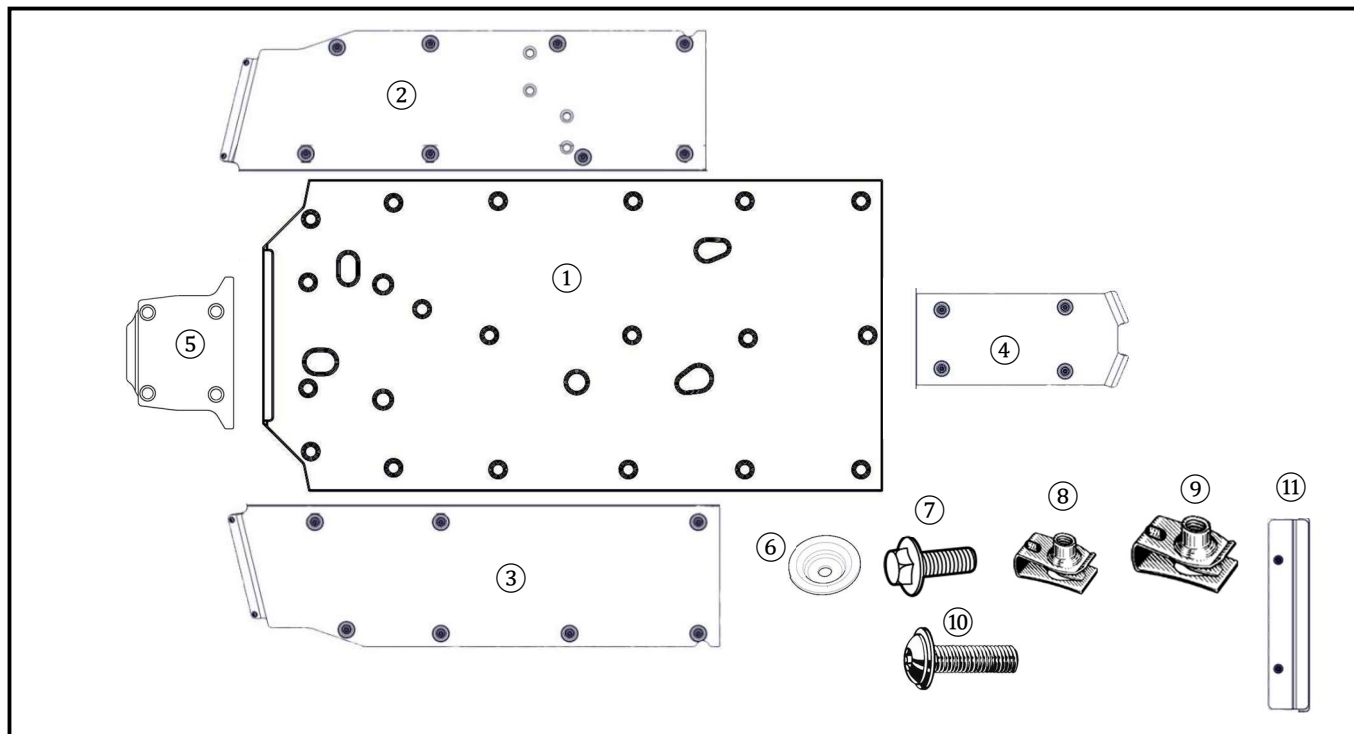


Fig. 1

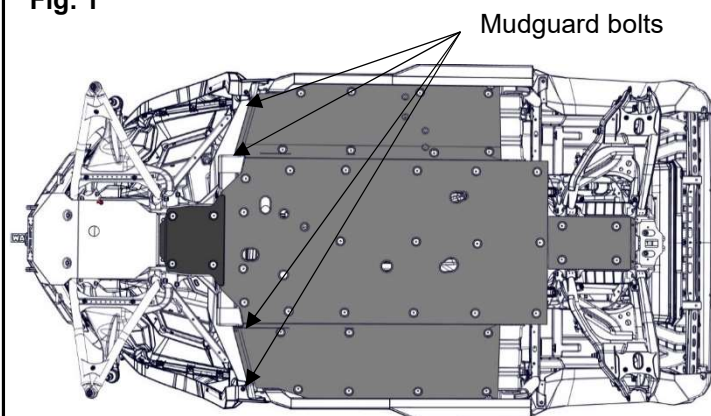


Fig. 2

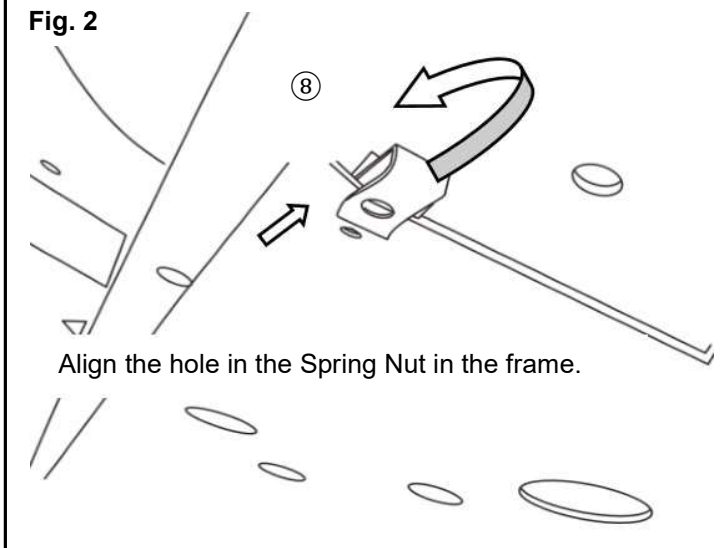
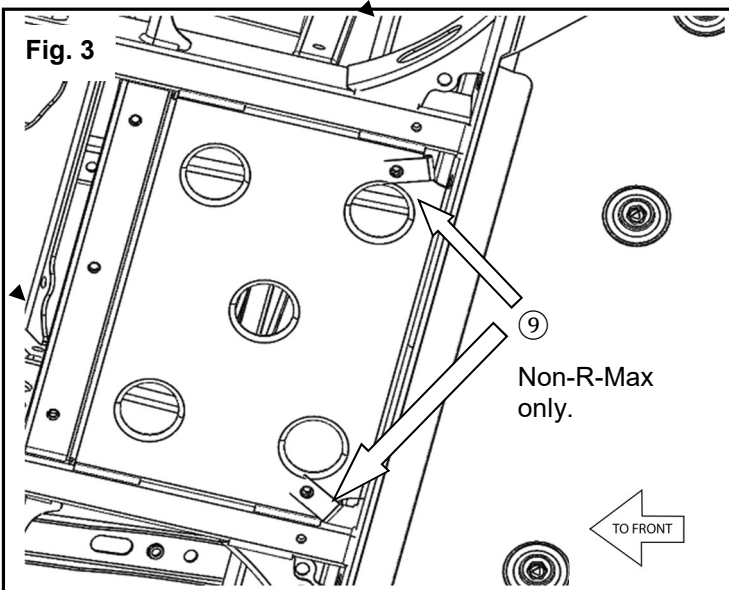


Fig. 3



PREPARATION:

- Place the vehicle on a secure and level surface.
- Set the parking brake.
- Clean the mount surfaces before beginning installation.
- **Tip:** The (5) Front Skid Plate is used on the R-Max Wolverine.
The (11) Bracket is used on the non-R-Max versions of Wolverine.

INSTALLATION:

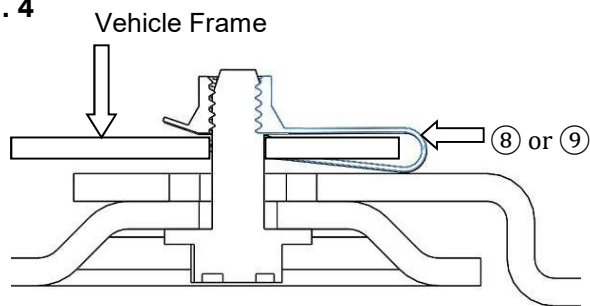
Tip: It is recommended that an assistant help hold the covers in place as they are fastened to the vehicle.

1. Remove the two lower bolts from each front mudguard. They will not be reused. (Fig. 1)

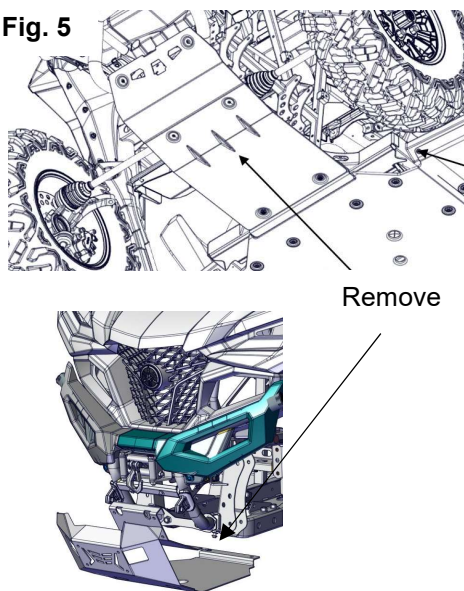
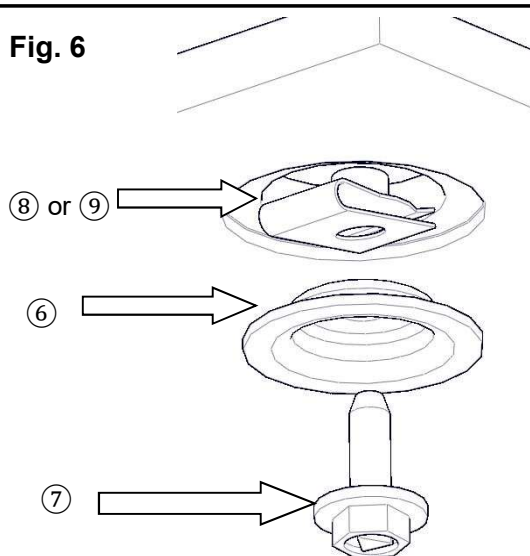
Tip: The threaded part of the (8) Spring Nut is inserted 'inside' the frame. Align the hole in the (8) Spring Nut with the hole in the frame. (Fig. 2 and 6)

2. Insert four (8) Spring Nuts underneath the vehicle in the rear portion of the frame for (4) Rear Skid Plate. (Fig. 6)
3. Go to underneath the driver's side of the vehicle and insert eight (8) Spring Nuts into the frame for (2) Left Skid Plate. (Fig. 6)
4. Go to underneath the passenger's side of the vehicle insert seven (8) Spring Nuts into the frame for (3) Right Skid Plate. (Fig. 6)
5. Insert eighteen (8) Spring Nuts in the center section of the frame underneath the vehicle for (1) Center Skid Plate. (Fig. 6)
6. (Non-R-Max only) Insert two (9) Spring nuts underneath the vehicle in the front portion of the frame for the (5) Front Skid Plate. (Fig. 3)
7. Align the driver's side (2) Left Skid Plate underneath the vehicle and have your assistant hold the cover over the spring nut locations. Install eight (6) Cup Washers and eight (7) M6x1x16mm Flanged Hex Head Cap Screw through the (2) Left Skid Plate and thread them into the spring nuts. (Fig. 5)

Tip: Leave the hardware loose so the skid plates can be adjusted after the rest of the kit is installed.

Fig. 4

*Only if the optional Skid Plate is installed. This Skid Plate attaches over the front lip of the (11) Bracket. Remove the Optional Skid Plate and install the bracket and then reinstall the Optional Skid Plate.

Fig. 5**Fig. 6**

8. Align the passenger's side (3) Right Skid Plate underneath the vehicle and have your assistant hold the cover over the spring nut locations. Install seven (6) Cup Washers and seven (7) M6x1x16mm Flanged Hex Head Cap Screw through the cover and thread them into the spring nuts. (Fig. 5)

9. Align the center (1) Center Skid Plate underneath the vehicle and have your assistant hold the cover over the spring nut locations. Install eighteen (6) Cup Washers and eighteen (7) M6x1x16mm Flanged Hex Head Cap Screw through the cover and thread them into the spring nuts. (Fig. 5)

Tip: If the vehicle also has the optional front skid plate installed, it will need to be removed and reinstalled after the cover is installed. (Fig. 5)

10. Align the rear (4) Rear Skid Plate underneath the vehicle and have your assistant hold the cover over the spring nut locations. Install four (6) Cup Washers and four (7) M6x1x16mm Flanged Hex Head Cap Screw through the (4) Rear Skid Plate and thread them into the spring nuts. (Fig. 6)

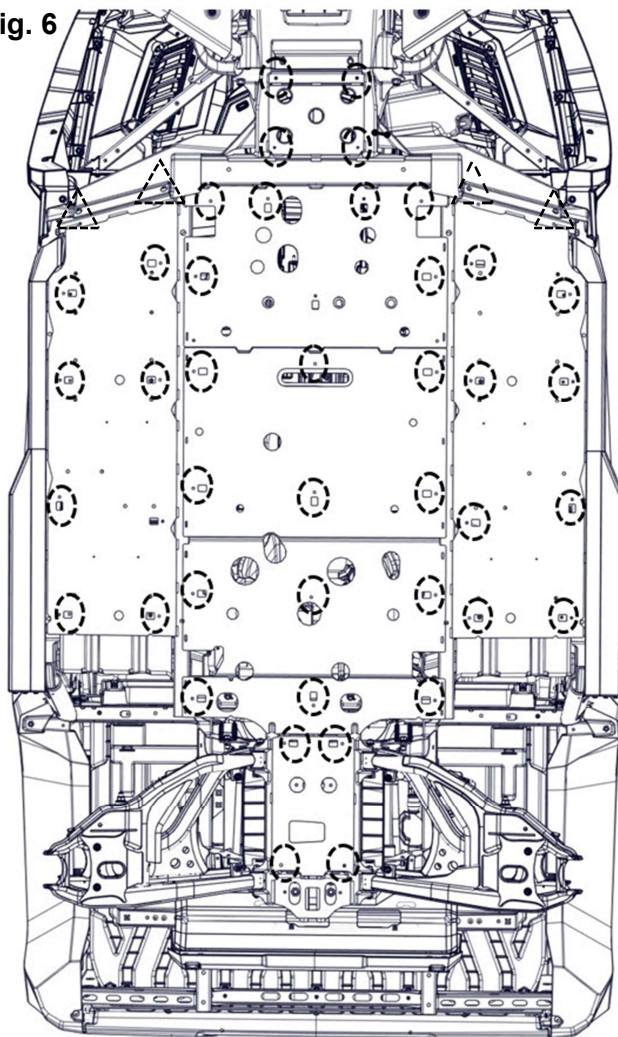
11. (R-Max only) Align the front (5) Front Skid Plate underneath the vehicle and have your assistant hold the cover over the frame mounting locations. Install four (6) Cup Washers and four (7) M6x1x16mm Flanged Hex Head Cap Screw through the cover and thread them into the frame. (Fig. 6)

12. Install two (10) M6x25mm Button Head Flange Screws into the two holes in the leading edge of (3) Right Skid Plate and into the mounting holes for the mudguard. Torque to 4Nm (0.4 m-k-g or 2.9 lb-ft) (Fig. 6)

13. Repeat Step: 12 for the Passenger's side of the vehicle for (2) Left Skid Plate.

14. Adjust the position of each skid plate as needed and torque all the bolts to 8.5 Nm (0.85 m-k-g or 6.0 lb-ft).

Fig. 6



R-Max Underside View

Optional Steps for Non-R-Max Wolverine:

1. Insert two ⑨ Spring Nuts into the mounting holes just forward of the ① Center Skid Plate. (Fig. 3)
2. Hold the ⑪ Bracket in place and install two ⑦ M6x1x16mm Flanged Hex Head Cap Screw and two ⑥ Cup Washers to secure the ⑪ Bracket to the frame. (Fig. 6)

MAINTENANCE:

Periodically, check torque on all hardware. If loose hardware is found, re-torque to specification.

CARE AND CLEANING:

Clean painted metal parts with a clean soft cloth and mild soap and water solution. Rinse and dry.

CUSTOMER SERVICE:

For further information see your Yamaha dealer.

ESTIMATED TIME TO INSTALL: 1.0 HRS.